

SELF-CLEANING BELT SCREEN

GENERAL CHARACTERISTICS

The self-cleaning continuous strand screen with pegs permits fine screening for small and medium-sized purification plants.

CONSTRUCTIONAL CHARACTERISTICS

- **FRAME** made of press-formed stainless steel;
- **SCREEN UNIT** consisting of a set of pegs with hooks made of acetal resin or ABS that lift the screened material;
- **FILTER PACK CLEANING SYSTEM** consisting of a fixed scraper and rotating brush powered by a geared motor, and a jet of pressurized water;

SPECIAL TYPE of chain transmission with rollers with hollow shafts. The rollers move on fixed supports that guarantee minimum friction and, being hollow, can contain stainless steel bars that form the supporting structure of the screening belt;

GEARED MOTOR that powers a pair of toothed wheels and their chains;

SPAN between 6 and 40 mm.

STANDARD CONFIGURATION

In AISI 304 stainless steel.

BELT made of acetal resin or ABS



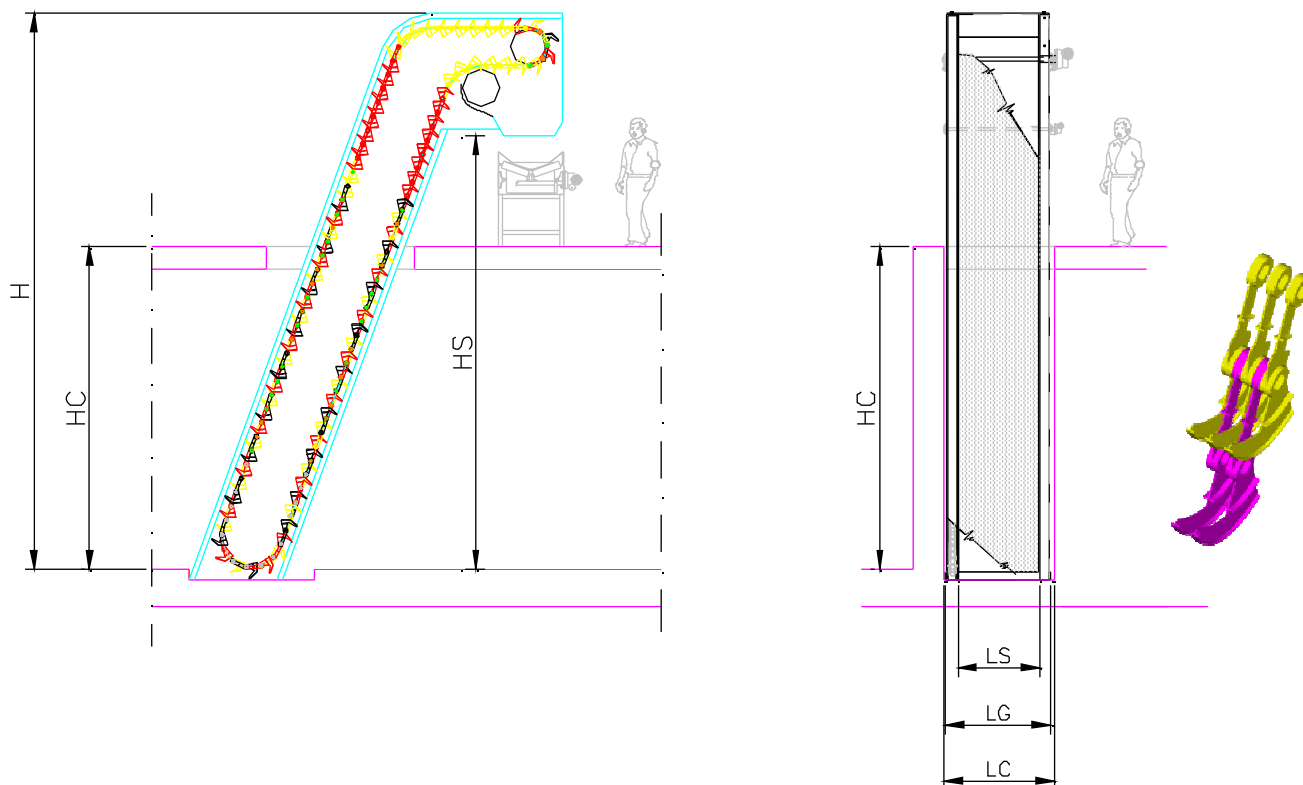
OPERATION

The water flows through the grilling mobile pack, and the solids retained, stakes are raised by special hook. At the top of the structure, the grid is downloaded into a special container or on a conveyor belt, the pack grilling with the pickets, they undergo a wash with rotating brush and water jet pressure and return in cycles without any solid particles. The overload protection is provided by sensors or Torque limiters electronic absorption.

SELF-CLEANING BELT SCREEN

SEZIONE LATERALE

SEZIONE FRONTALE



Main Features	UNIT	Dimensions		
Screen width (LG)	m	0,3 ÷ 2,4		
Channel width (LC)	m	LG + 0,1		
Screen width (LS)	m	LG ≤ 1,0	1,0 < LG ≤ 1,5	1,5 < LG ≤ 2,5
		LG – 0,10	LG – 0,15	LG – 0,20
Channel height (HC)	m	500 ÷ 6000		
Outlet height grid (HS)	m	HC + 0,7		
Max height (H)	m	HC + 1,3		
Inclination on the vertical	gradi	0 ÷ 60		
Light filtration (F)	mm	3 ÷ 20		
Installed power	kW	0,25 ÷ 1,5		
weight	kg	1050*HS+720*LG-50*F/5-915		

Portata nominale (listri/secondo) – Luce di filtrazione (mm)

MODELS							
1	2	3	4	5	6	7	8
176*LS*HC	209*LS*HC	235*LS*HC	256*LS*HC	274*LS*HC	289*LS*HC	302*LS*HC	312*LS*HC

The company reserves the right to make modification and improvements without prior notice.